

# MONTHLY MEMBERSHIP PROGRESS REPORT

LOCATION CONNECTICUT

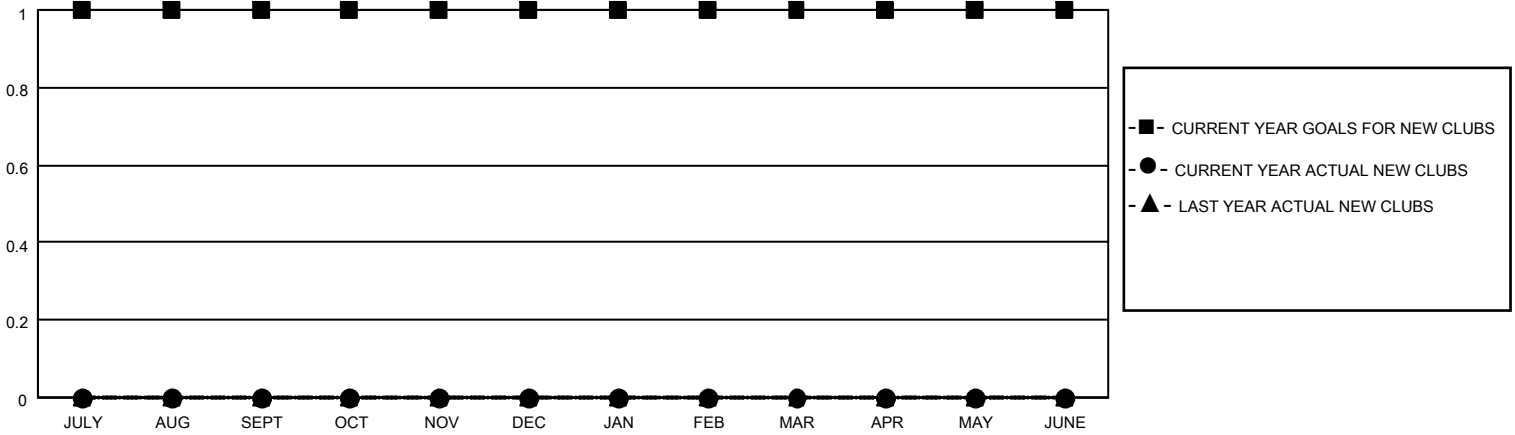
District 23 A

Results as of: 4/30/2022

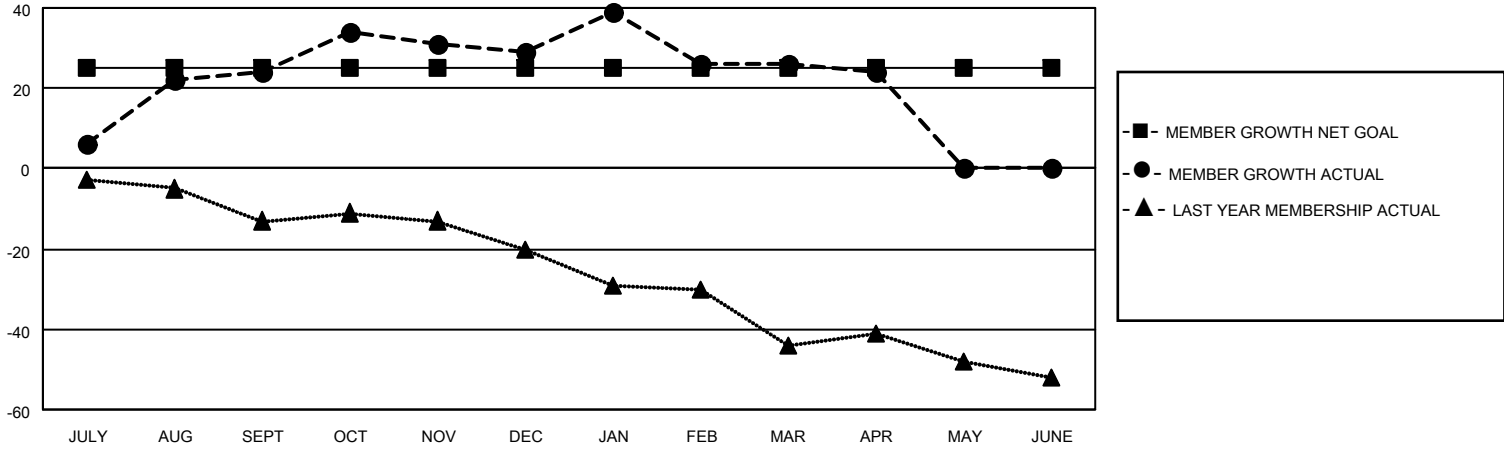
Clubs			
RESULTS FOR 2021-2022			
QUARTER	NEW CLUB GOAL	NEW CLUBS	DROPPED CLUBS
JULY/AUG/SEPT	1	0	1
OCT/NOV/DEC	0	0	1
JAN/FEB/MAR	0	0	0
APR/MAY/JUNE	0	0	0

Members			
RESULTS FOR 2021-2022			
QUARTER	MEMBER GROWTH NET GOAL	MEMBER GROWTH ACTUAL	DROPPED MEMBERS ACTUAL (including transfers)
JULY/AUG/SEPT	25	48	21
OCT/NOV/DEC	0	38	30
JAN/FEB/MAR	0	40	31
APR/MAY/JUNE	0	6	7

**GOALS AND ACTUAL NEW CLUBS CUMULATIVE**



**GOALS AND ACTUAL MEMBERS CUMULATIVE**



**DROPPED CLUBS: 2**

**30 CLUBS OF 49 ADDED 1 OR MORE NEW MEMBERS**

**GENDER DISTRIBUTION**

MALE	841 (65.04%)
FEMALE	452 (34.96%)
NON BINARY	0 (0.00%)
PREFER NOT TO ANSWER	0 (0.00%)

**DROPPED MEMBERS**

[CLICK HERE FOR CUMULATIVE MEMBERSHIP DATA](#)

DECEASED	13
CLUB CANCELLED	2
OTHER	74
<b>TOTAL</b>	<b>89</b>

TOTAL FAMILY UNIT MEMBERS 177

FAMILY MEMBERS PAYING HALF DUES 91